

Short Title

STONE MOUNTAIN LITHONIA ROAD FROM POOLE STREET TO ROCKBRIDGE ROAD

GDOT Project No.

0006899/0007621

Federal ID No.

CSSTP-0006-00(899)

Status

Programmed

Service Type

Last Mile Connectivity / Joint Bike-Ped Facilities

Sponsor

DeKalb County

Jurisdiction

DeKalb County

Analysis Level

Exempt from Air Quality Analysis (40 CFR 93)

Existing Thru Lane

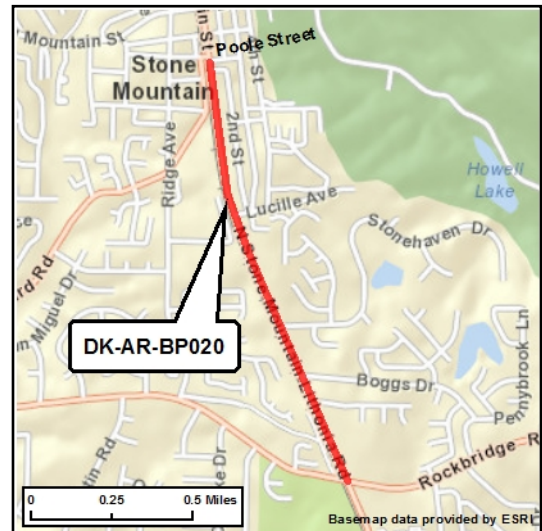
N/A

Planned Thru Lane

N/A

Detailed Description and Justification

This project includes sidewalks and bike lanes along S. Stone Mountain Lithonia Road from Rockbridge Road to Poole Street in the City of Lithonia. Project to include bicycle lanes and pedestrian features to improve roadway operations by promoting alternative modes of transportation and improve mobility and accessibility. This roadway is currently a MARTA bus route.



Copyright 2005 Aero Surveys of Georgia, Inc. Reproduced by permission of the copyright owner. Contact <http://www.aerotlas.com>

Network Year

2015

Corridor Length

6.9 miles

Phase Status & Funding Information		Status	FISCAL YEAR	TOTAL PHASE COST	BREAKDOWN OF TOTAL PHASE COST BY FUNDING SOURCE			
					FEDERAL	STATE	BONDS	LOCAL/PRIVATE
PE	Local Jurisdiction/Municipality Funds	AUTH	2008	\$215,000	\$0,000	\$0,000	\$0,000	\$215,000
ROW	Local Jurisdiction/Municipality Funds	AUTH	2011	\$339,728	\$0,000	\$0,000	\$0,000	\$339,728
UTL	Local Jurisdiction/Municipality Funds		2014	\$287,646	\$0,000	\$0,000	\$0,000	\$287,646
CST	High Priority Projects from TEA-21		2014	\$2,960,234	\$719,921	\$0,000	\$0,000	\$2,240,313
CST	SAFETEA-LU Earmark		2014	\$1,124,875	\$899,900	\$0,000	\$0,000	\$224,975
				\$4,927,483	\$1,619,821	\$0,000	\$0,000	\$3,307,662

SCP: Scoping PE: Preliminary engineering / engineering / design / planning PE-OV: GDOT oversight services for engineering ROW: Right-of-way Acquisition
 UTL: Utility relocation CST: Construction / Implementation ALL: Total estimated cost, inclusive of all phases



For additional information about this project, please call (404) 463-3100 or email transportation@atlantaregional.com.

